



Heckmann Building Products Inc.

1501 N. 31st Avenue

Melrose Park, IL 60160-2911

800-621-4140 or 708-865-2403 Fax: 708-865-2640

www.heckmannanchors.com

. SUBMITTAL SHEET: #1100 Ladder-Type Masonry Wall Reinforcement.

Manufactured from 9 Gage wire, 10' long with butt-welded perpendicular cross wires welded 16" on center to avoid interference with reinforcement in block cores.

Wire is deformed for maximum bonding in mortar joints.

Packaged in 50 pc (500 lin ft) or 25 pc (250 lin ft) bundles

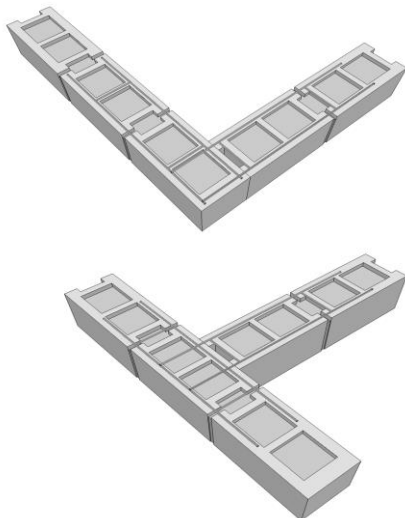
Special sizes and lengths are available.

- Reduces Cracking.
- Increases lateral flexural strength.
- Increases ductility and elasticity.

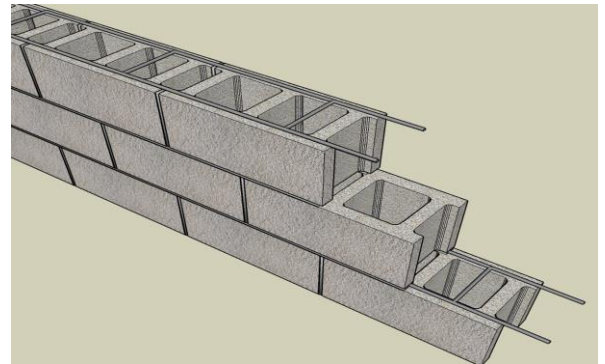
Standard Catalog Numbers

Size

Mill Galv	Hotdip Galv	Stainless Steel	Width	Wall Size
11006G	11006H	11006S	4	6
11008G	11008H	11008S	6	8
110010G	110010H	110010S	8	10
110012G	110012H	110012S	10	12



Corners and Tee units also available



ASTM A82 cold drawn steel wire.
ASTM A951 / A951M-06
Tensile Strength 80,000 PSI
Yield Point 70,000 PSI minimum
Reduction of Area 30%

Finishes:

Stainless Steel:

ASTM A 580 Type 304.

Hotdip Galvanized:

ASTM A 153 Class B-2: (1.50 oz/ ft²)(0.46kg/m²)

Mill Galvanized:

Wire: ASTM A 641 (0.1 oz/ ft².)

Conforms to requirements of ASCE / ACI 530 / TMS402 Building Code requirements for masonry structures.

Approvals:

Comments: