



Heckmann Building Products Inc.

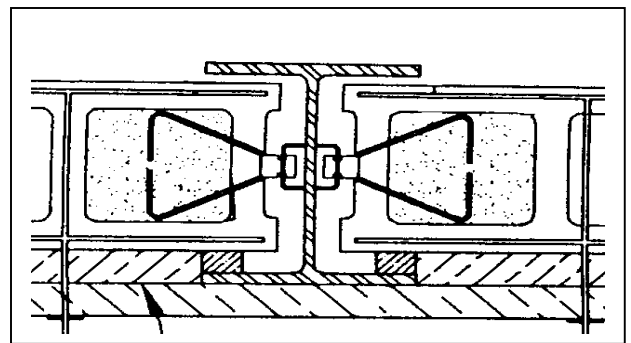
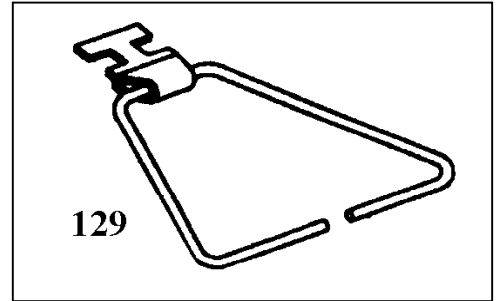
1501 N. 31st Avenue
 Melrose Park, IL 60160-2911
 800-621-4140 or 708-865-2403 Fax: 708-865-2640
www.heckmannbuildingprods.com

SUBMITTAL SHEET: #129 CHANNEL SLOT TRIANGULAR TIE

Used for attaching brick veneer or block to an existing backup wall that has Channel Slots attached. (See Products #130 Weld-On Channel Slots, #131 Built-In Channel Slots, #132 Face-Type Channel Slots, and #133 Long Channel Slots)

Standard Sizes: 12 gage Channel Slot Clip attached to a 3/16" diameter wire triangle tie in the following lengths: 3", 4", 5", 7", 9", and 11".

Available in Mill Galvanized, Hotdip Galvanized After Fabrication, and Stainless Steel.



Stainless Steel:

Sheet metal anchors and ties: ASTM A 167 AISI Type 304.
 Plate and bent bar anchors: ASTM A 666 AISI Type 304.
 Wire ties and anchors: ASTM A 580 AISI Type 304.

Hotdip Galvanized:

ASTM A 153 Class B-2: (1.50 oz/ ft²)(0.46kg/m²)

Mill Galvanized:

Sheet metal anchors and ties: ASTM A 653 G60
 Wire: ASTM A 641 (0.1 oz/ ft².)

Plain Steel:

Sheet Metal anchors and ties: ASTM A 569, ASTM A 366.
 Plates, bars, and shapes: ASTM A 123, ASTM A 36.
 Wire: ASTM A 82, ASTM A 82-95a.

Approvals:

Comments:

TEST RESULTS	TENSION no welded clip	TENSION welded clip	COMPRESSION	
			2" Cavity (50.8mm)	4" Cavity (101.6mm)
R.E.E.L. Loads	322 lbs	357 lbs	238 lbs	272 lbs
Deflection	.084 in. (2.1336mm)	.269 in. (6.8326mm)	.034 in. (.8636mm)	.054 in. (1.3716mm)
R.E.M. Loads	832 lbs	1,620 lbs	271 lbs	309 lbs
Deflection	.271 in. (6.8834mm)	.683 in. (17.3482mm)	.070 in. (1.778mm)	.091 in. (2.3114mm)
Peak Loads	935 lbs	1,620 lbs	515 lbs	578 lbs
Deflection	.311 in. (7.8994mm)	.683 in. (17.3482mm)	.166 in. (4.2164mm)	.240 in. (6.096mm)