



Heckmann Building Products Inc.

1501 N. 31st Avenue

Melrose Park, IL 60160-2911

800-621-4140 or 708-865-2403 Fax: 708-865-2640

www.heckmannbuildingprods.com

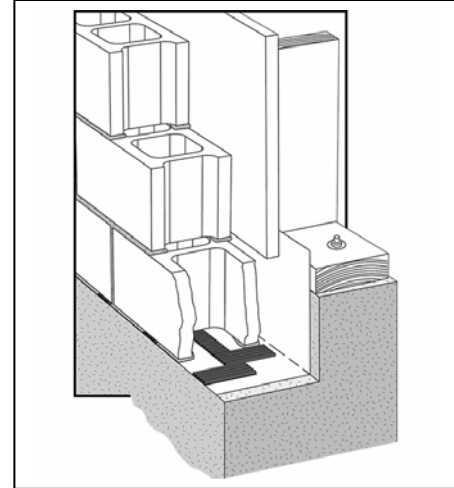
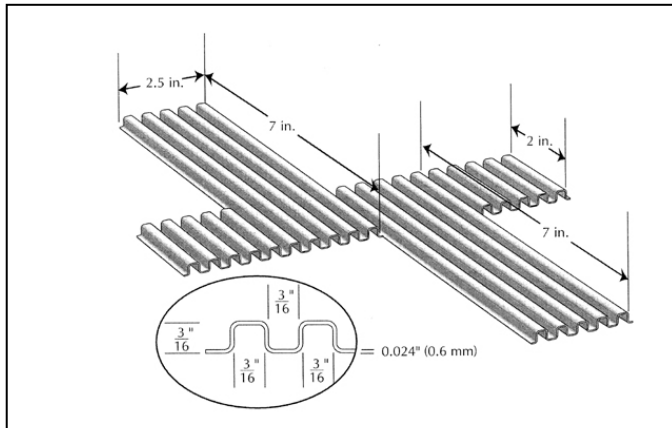
SUBMITTAL SHEET: No. 367 Core/Cavity Vent™ Weep System

Core/Cavity Vent™ creates many openings at the lowest point of the core and cavity of the wall, continuously along the wall.

- Forms the bottom side of the bed joint of mortar
- 3/16" thickness does not interrupt normal layout
- Creates 4 vent holes every 9-1/2" on entire perimeter of both core and cavity
- Maintains bearing & bond
- Architectural colors by special order

Installation:

- Clean Installation surface
- Core/Cavity Vent™ should be positioned on flashings and waterstops with material centered on block wall. Allow intermittent edges to extend into the wall cavity and to the exterior as illustrated
- Apply bed joint of mortar.
- Install masonry units on bed of mortar, following normal installation procedures
- Tool and finish mortar joints
- Score Core/Cavity Vent™ at exterior wall line while mortar is still plastic
- Break off at scored line



0.024" (0.6 mm) thick high impact polystyrene formed and die cut 2-1/2" (64 mm) wide weep legs offset on each side of continuous beld, at 9-1/2" (241 mm) on center; continuous belt 2" (51 mm) wide; and total width 1'-0" (305 mm).

Packaged:
25 foot rolls
8 rolls/box/200ft
16 boxes per pallet/3,200 ft

Approvals:

Comments: