

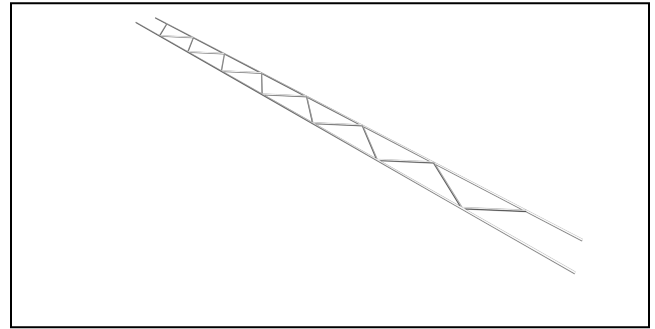
**Submittal Sheet
#1200 Truss Type
Wire Reinforcement**



Truss Wire is typically used when differential movement is not a concern, as in single wythe concrete masonry walls.

Use Ladder Type reinforcement for reinforced or grouted walls.

Wire deformations 8 sets per inch in compliance with ASTM A951.



Available in 10 ft lengths

	Wire Size	Side Rods	Cross Rods
	Standard	9 gage	9 gage
	Heavy Duty	3/16"	9 gage
	Extra Heavy Duty	3/16"	3/16"

	CMU Size
	4"
	6"
	8"
	10"
	12"

	Steel Type
	Mill Galvanized
	Hotdip Galvanized
	Stainless Steel

Quantity in Lineal Feet: _____

Material Specifications

ASTM A951/A951M (Standard Specification for Steel Wire for Masonry Joint Reinforcement)

Stainless Steel: Wire: ASTM A 580 AISI Type 304 (AISI Type 316 available upon request)

Hotdip Galvanized: ASTM A 153 Class B-2: (1.50 oz/ ft²).(0.46kg/m²)

Mill Galvanized: Wire: ASTM A 641 (0.1 oz/ ft².)

Plain Carbon Steel: Wire: ASTM A1064/A1064M, ASTM A 82/A82M Tensile Strengths 80,000 psi Yield Point 70,000 psi