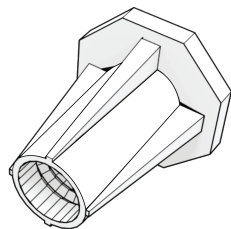


# H

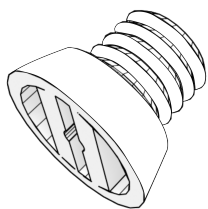
# HECKMANN™

Building Products

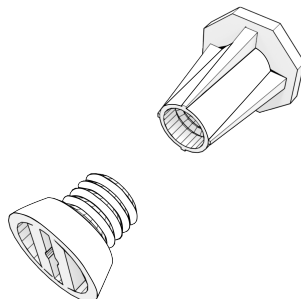
## Submittal Sheet #444 #446 Star Threaded Inserts Star Adapter Plugs



#444  
Star Threaded Inserts



#446  
Star Adapter Plug



444 Inserts	Standard Number	Size	Bolt Size	Pcs Per Box	Ultimate Load (tension lbs)	Quantity
	P-24-T	3/8" x 1"	3/8-16	1,000	3,075	
	P-25-T	3/8" x 1-3/8"	3/8-16	800	3,600	
	P-35-T	1/2" x 1-1/2"	1/2-13	350	3,675	
	P-36-T	1/2" x 2 -7/8"	1/2-13	160	6,075	
	P-45-T	5/8" x 1-11/16"	5/8-11	250	4,725	
	P-46-T	5/8" x 2 -7/8"	5/8-11	130	7,500	
	P-55-T	3/4" x 1 -11/16"	3/4-10	200	5,175	
	P-56-T	3/4" x 2-7/8"	3/4-10	100	9,375	
446 Plugs	Standard Number	Size				
	P-25-A	3/8"		500		
	P-35-A	1/2"		500		
	P-45-A	5/8"		250		
	P-55-A	3/4"		100		

APPLICATION: Threaded inserts are cast in concrete and offer a clean and unobtrusive appearance without protrusion beyond the face of the concrete. They permit anchor bolts and eye bolts to be removed and reinstalled as often as required. Material is Zamac Zinc Alloy only.

Adapter Plugs are nailed to the wooden form and the Inserts are threaded onto the plugs. Once the concrete is dry the forms are removed and the plugs are unscrewed exposing the embedded threads.

### PROJECT DETAILS:

LOCATION:

PROJECT NAME:

NOTES:

### CONTACT INFO

NAME:

COMPANY:

PHONE:

E-MAIL:

DATE:

ACCEPTED BY:

Heckmann is not responsible for your choice of anchors and dimensions for your project. The choice of anchors and products should be decided by the architects or engineers knowledgeable with the project. Once a custom order has been placed it cannot be canceled or returned. Any changes to the original order may require additional charges. Your signature is required for us to proceed. By signing this order, you agree that you have reviewed the details and specifications of the custom order and that said details and specifications are per your request. Further, by signing this order you are waiving **any claim** against or right of non-payment for products produced to the specifications of the order.

REVISED: 10/2023

110 Richards Avenue  
Norwalk, CT 06854-1685

Phone: (800) 621-4140

www.heckmannanchors.com  
info@heckmannanchors.com

Standard No.	Bolt Size	A	B	L	Ultimate Load (lbs)	Weight Per 100 (lbs)	Edge Dist. (Tension)
P-24-T	3/8 x 16	9/16"	1"	1"	3,075	4.28	3"
P-25-T	3/8 x 16	9/16"	7/8"	1-3/8"	3,600	6.84	3"
P-35-T	1/2 x 13	5/8"	1-1/4"	1-1/2"	3,675	14.72	3"
P-36-T	1/2 x 13	9/16"	1-3/8"	2-7/8"	6,075	29.9	3"
P-45-T	5/8 x 11	15/16"	1-3/8"	1-11/16"	4,725	20.96	3"
P-46-T	5/8 x 11	13/16"	1-1/2"	2-7/8"	7,500	35.8	3"
P-55-T	3/4 x 10	15/16"	1-5/8"	1-11/16"	5,175	31.6	3-1/2"
P-56-T	3/4 x 10	15/16"	1-9/16"	3"	9,375	47.6	3-1/2"

